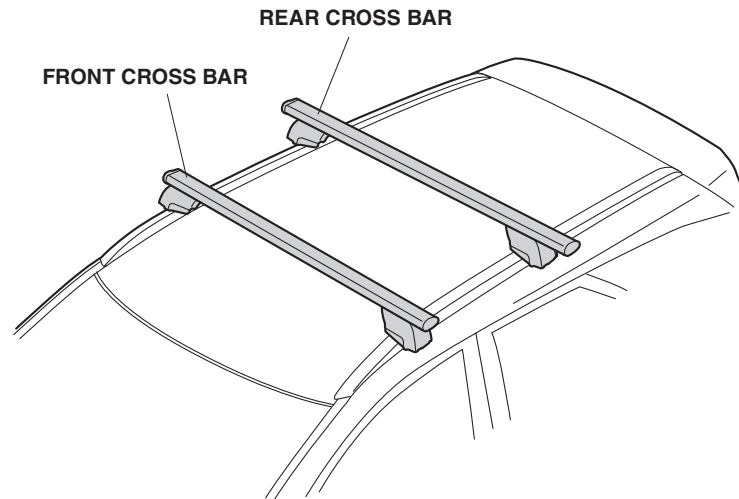


CROSS BARS

CIVIC TOURER

GENERAL VIEW



QC71101AT

FOR YOUR SAFETY (Read carefully)

Introduction of Symbol Messages

- These symbols warn you about the possible hazards and explain how to avoid them. And give you some advices.

! DANGER

You will be killed or seriously hurt if you do not follow the instructions.

! WARNING

You can be killed or seriously hurt if you do not follow the instructions.

! CAUTION

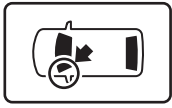
You can be hurt if you do not follow the instructions.

NOTICEGives advice to prevent damage to the product.
Gives helpful information or instructions to be followed in using the product.

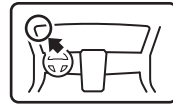
Indicates prohibited actions.

Introduction of Icons

- These icons indicate the working place and the worker's vision.



The place for the vehicle.



The place for the instrument panel.

- These icons indicate the necessary things for your safety and the work.



Wear eye protection.



Wear heavy gloves.



Work with an assistant.



Place the part on a blanket.



Remove any burrs.



Use the touch-up paint and dry.



Keep the parts and give it to the customer.
(Not use)



Press firmly.



Tighten by specified torque.



Work perpendicularly.



Clean with the contact cleaner.

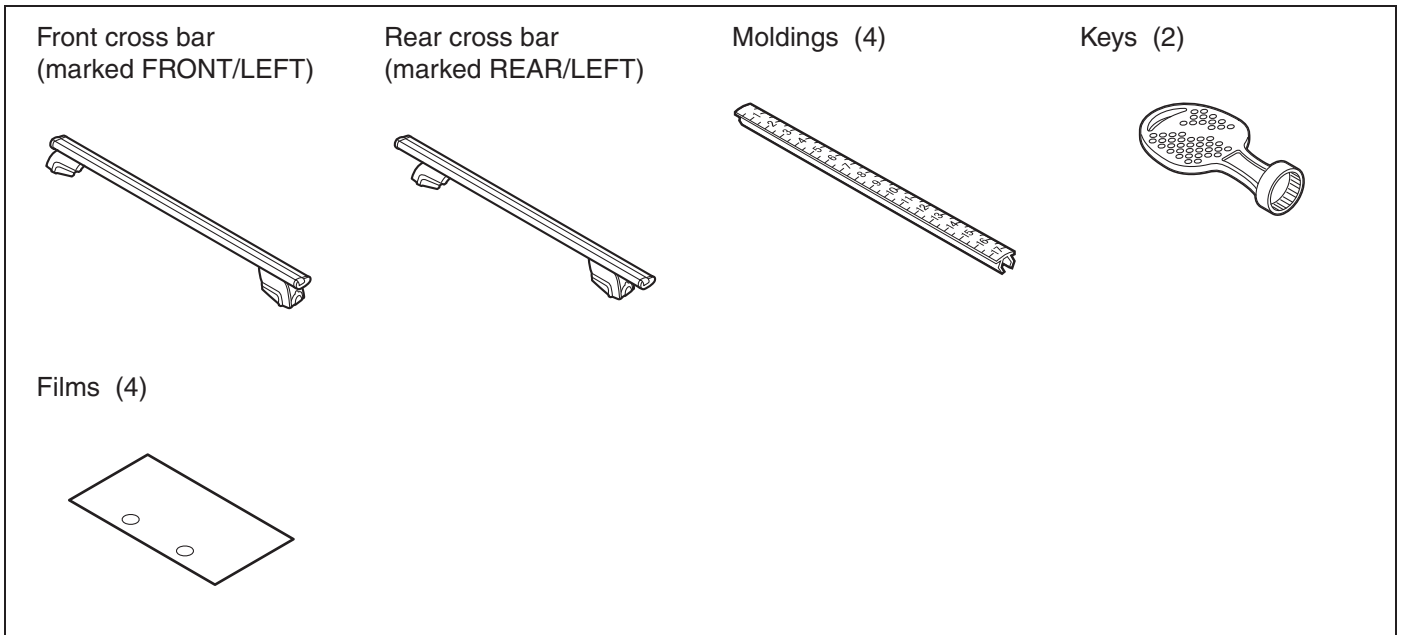
Safety: General

- Be careful not to damage the vehicle and the parts.

Safety: For the Accessory

- Do not perform installation work and attaching work at the place where gets the direct rays of the sun or the dust appears.
- Always install these accessories at the ambient air temperature 15°C (60°F) or above.
- Heat the accessories and bonding surfaces if the ambient air temperature is below 15°C (60°F).
- Attach the accessories by pressing it firmly with the palm of your hand. Be careful not to damage the accessories and the vehicle parts.
- Carefully place the double-sided adhesive tape on the proper position. Once the double-sided adhesive tape touches the surface, do not try to detach and relocate it. If you attempt to move after it touches the surface, you will damage the part before the adhesive will give way.
- Not to wash the vehicle for 24 hours to allow the adhesive to cure.

PARTS LIST



TOOLS AND SUPPLIES REQUIRED

- Utility knife
- Ruler
- Contact cleaner
- Masking tape
- Shop towel

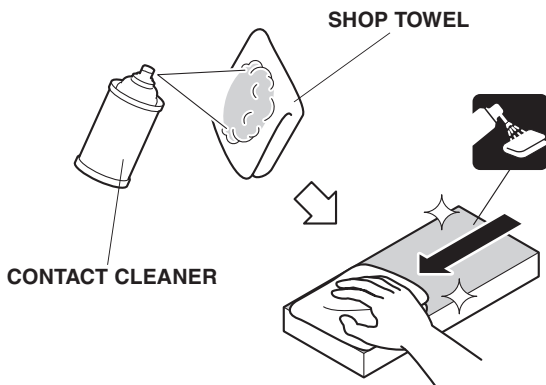
INSTALLATION

How to Use the Contact Cleaner

- Using contact cleaner on a shop towel, thoroughly clean the areas where the accessories will be attached.

NOTICE

- Always use the contact cleaner.
- Do not apply the cleaner to the object of the work directly.
- Completely dry the cleaned areas before attachment work.



Q931901BW

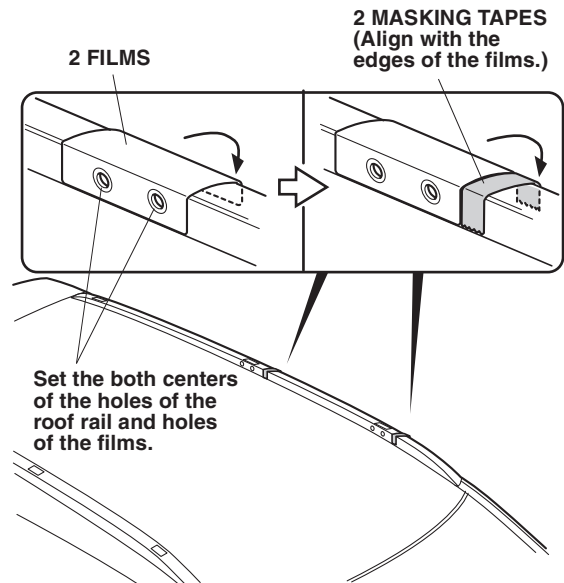
Installing the Cross Bars

1. Align the films.

NOTICE

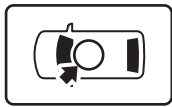
- Do not remove the adhesive backings of the films.

2. Attach the masking tapes.
3. Remove the films.



QC71103AT

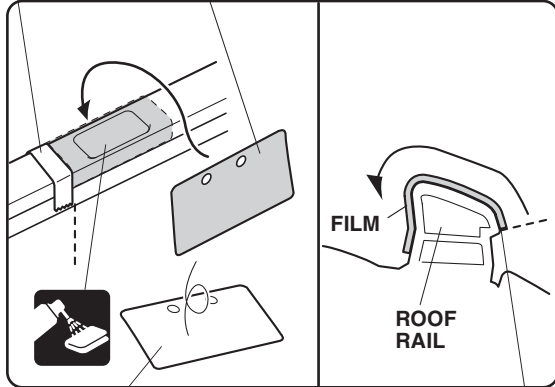
4. Remove the adhesive backings.
5. Attach the films.
6. Remove the masking tapes.



MASKING
TAPES

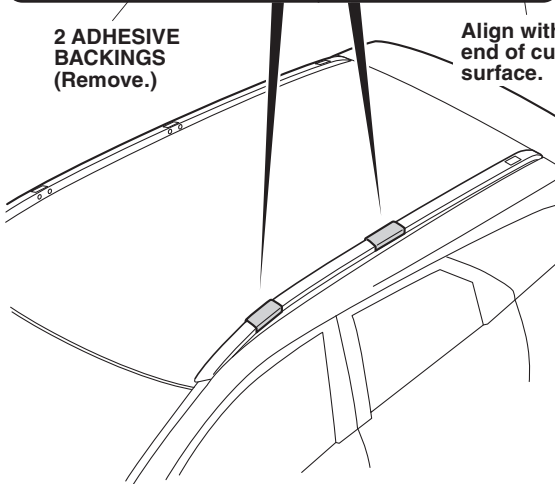
2 FILMS
(Align with the edges
of the masking tapes.)

<SECTION VIEW>



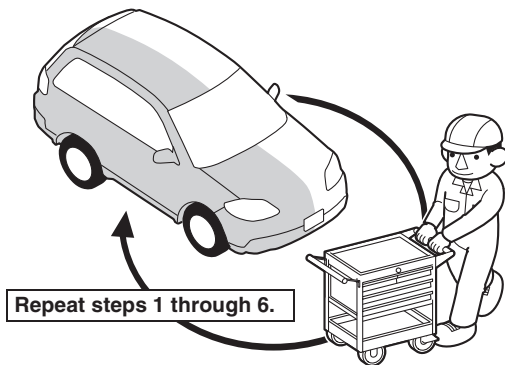
2 ADHESIVE
BACKINGS
(Remove.)

Align with the
end of curved
surface.



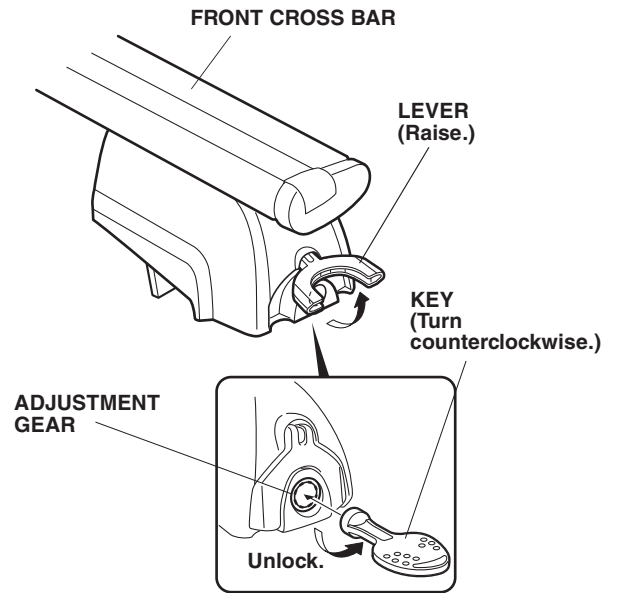
QC71104AT

7. Repeat same procedures for the other side.



Q9D1014AM

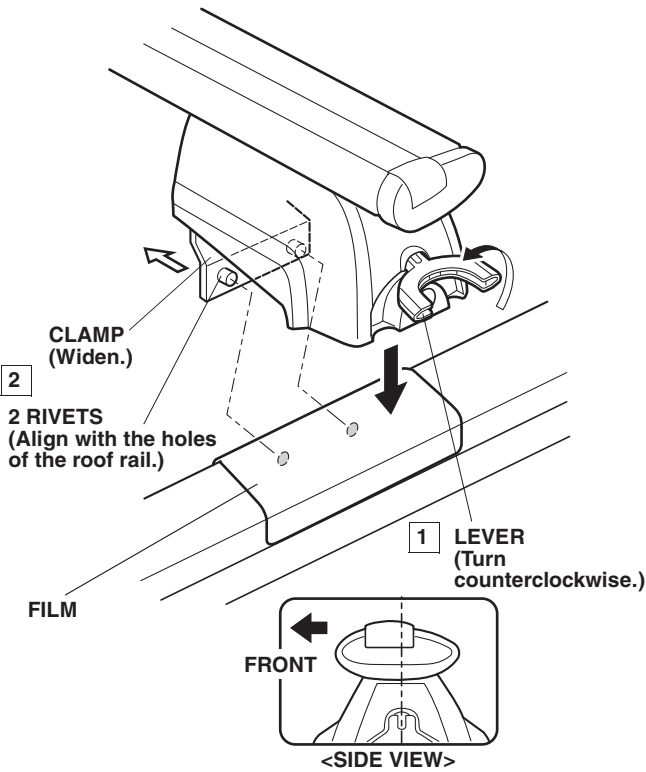
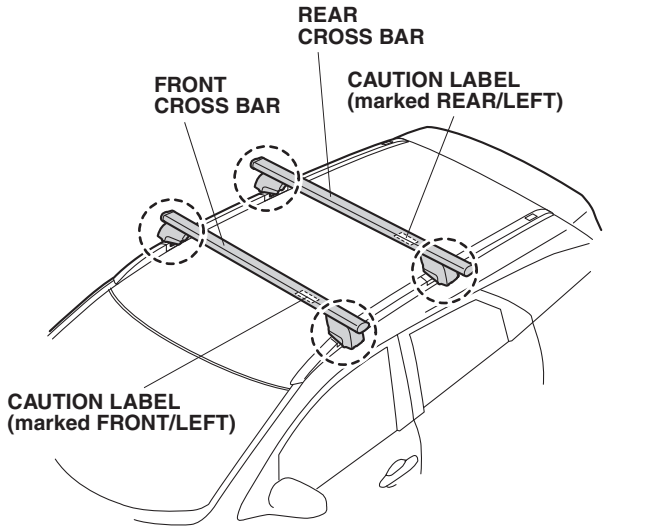
8. Unlock the lever.



QC71106AT

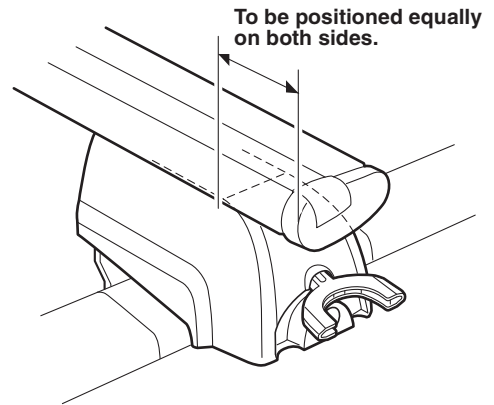
9. Position the front cross bar.

NOTICE
<ul style="list-style-type: none"> • The cross bar should be installed with the caution labels on the cross bar on the left side to be seen from the rear of the vehicle. • When installing, check that the cross bar foot is not sticking out of the films.



QC71107BT

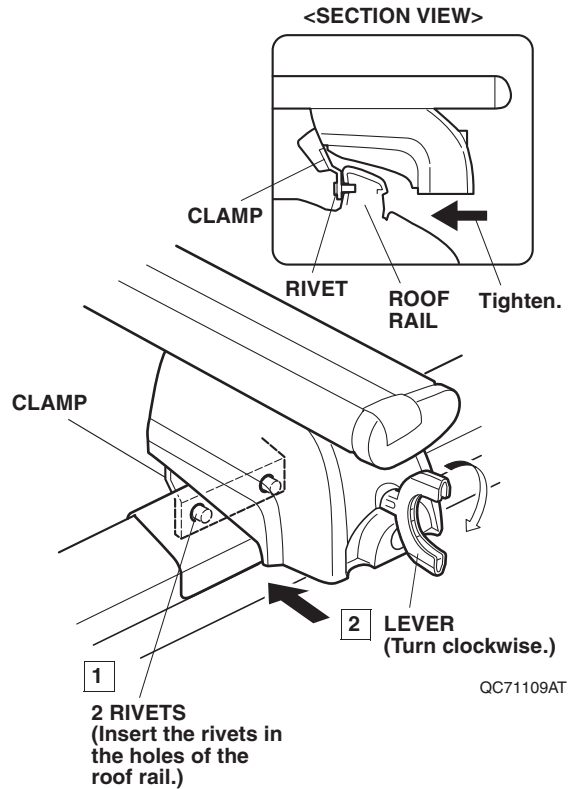
10. Adjust the front cross bar.



QC71108AT

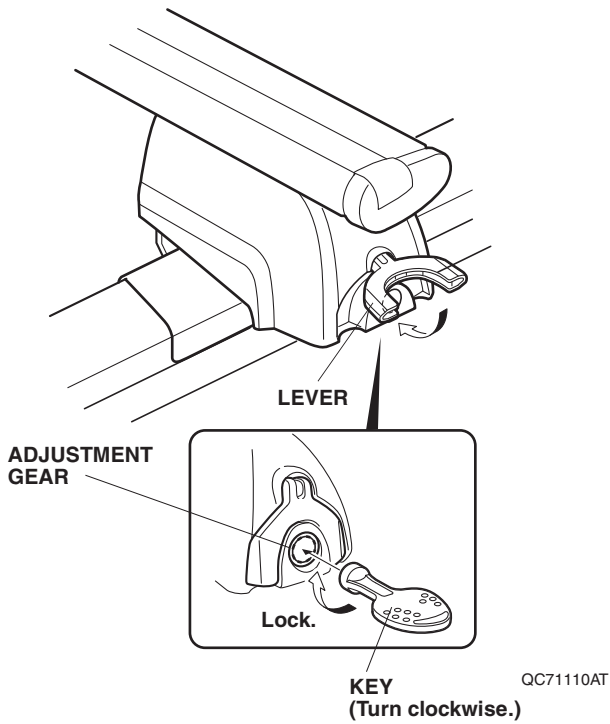
11. Secure the front cross bar.

NOTICE
<ul style="list-style-type: none"> • Make sure to check that the rivets are inserted properly. • Hold the clamp firmly with your hand while turning the lever.



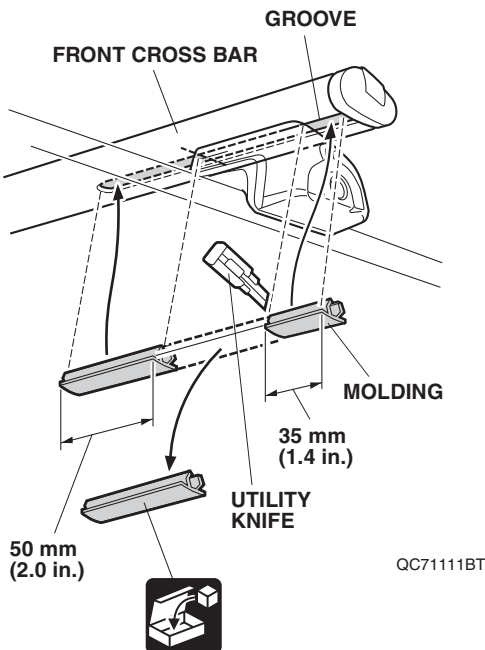
QC71109AT

12. Lock the lever.
13. Repeat steps 8 through 12 for the rear side.

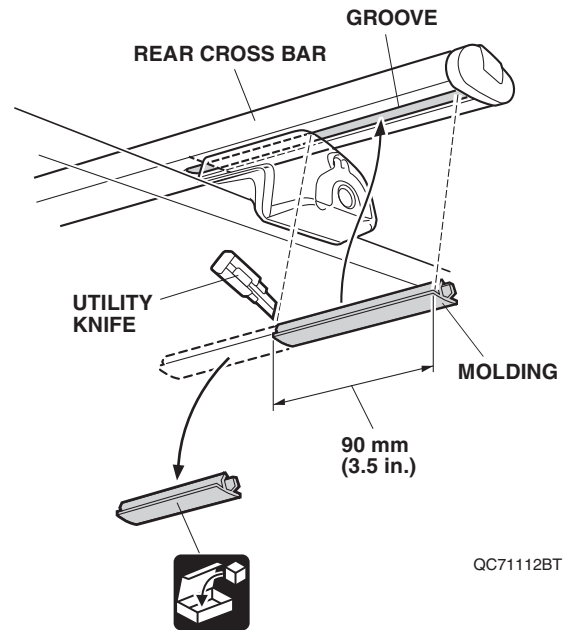


14. Cut the moldings.
15. Install the moldings.

<FRONT SIDE>



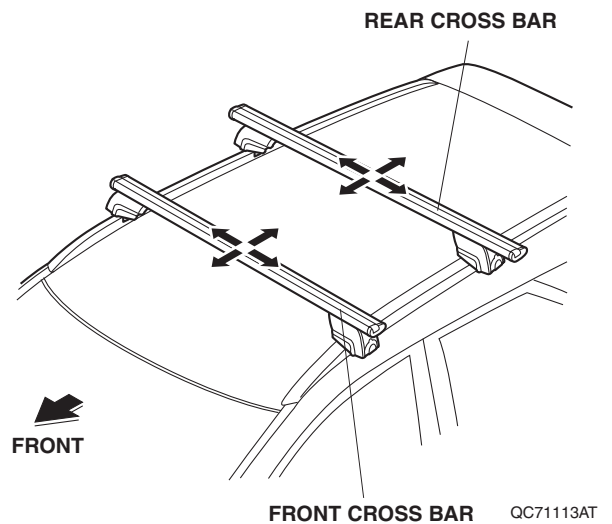
<REAR SIDE>



16. Check the front and rear cross bars.

NOTICE

- Rock the cross bars in all directions to check if they are installed securely without play or rattle.
- If found with abnormal play or rattle, retighten the levers, or reinstall the cross bars as described in these installation instructions.



17. Check that all parts are installed properly. (End of installation)

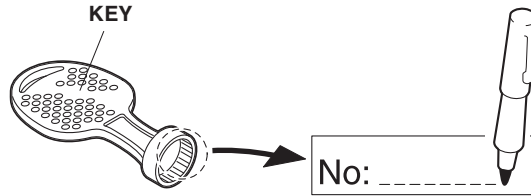
Please pass your customer the following things.

- 2 Keys

Please give your customer a copy of this page.

Use and Care

- Write down the knob key number in case the key is lost or stolen.



QC71114AT

- The maximum allowable load is 75 kg (165 lbs) (includes the weight of cross bars which is 4 kg, 8.8 lbs). Do not overload. Make sure to fasten load so that it cannot come loose or cause damage. Be careful to secure load against movement in driving direction or sideways movements.
When loading the cross bar, make sure that the weight is evenly distributed and that the center of gravity of the load is kept as low as possible. If small and very heavy loads have to be transported, make sure that it is placed on one side of the cross bar and not into the middle.
- For safety reasons, the load may not protrude from the vehicle outline.
- Before driving, make sure that all fastening parts are fixed according to regulations. Please check if the load is fastened properly. Stop after a short drive to check cross bar, then check every time before driving.
- Please pay attention to the altered behavior to the vehicle (due to side wind sensitivity, when driving in bends and when braking) when you drive a mounted (loaded) cross bar. To safeguard other road users, and in order to reduce air resistance, the cross bar should be dismantled if it is not used.
- Obey local laws and regulations.

Advice for your own security

- **IMPORTANT:** This cross bar is especially designed for the specified vehicle. Please therefore check with your retailer which type of cross bar is needed when changing your vehicle.
Test reports from the automotive industry and trade journals prove that when objects with large surfaces are transported, (e.g. surfboards, ski/transport boxes) the roof of the vehicle will be additionally strained due to the strongly increased air resistance. (When transporting a surfboard, the bow should point downwards in the driving direction.) The driving characteristics change as well; therefore we recommend you to adjust your speed accordingly.
Do not put the vehicle through an automatic vehicle wash when the cross bar is mounted.

The manufacturer takes no responsibility for damage caused by an incorrectly fitted cross bar.

- **READ VEHICLE OWNER'S MANUAL CAREFULLY.**
The vehicle Owner's Manual has important safety and operation information.

These instructions should be considered a permanent part of the vehicle and should remain with the vehicle if sold.